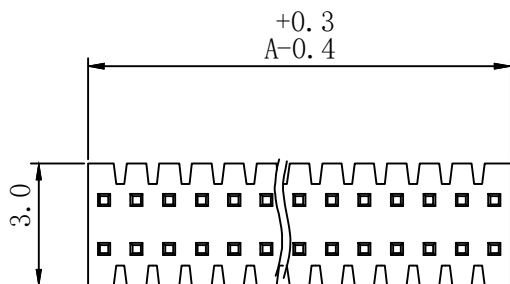


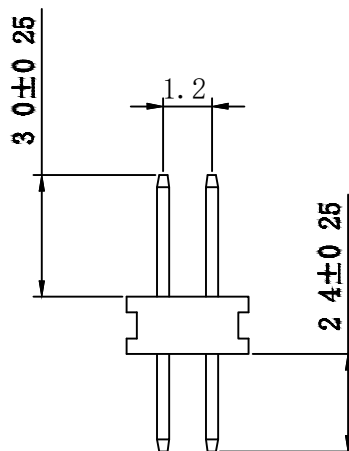
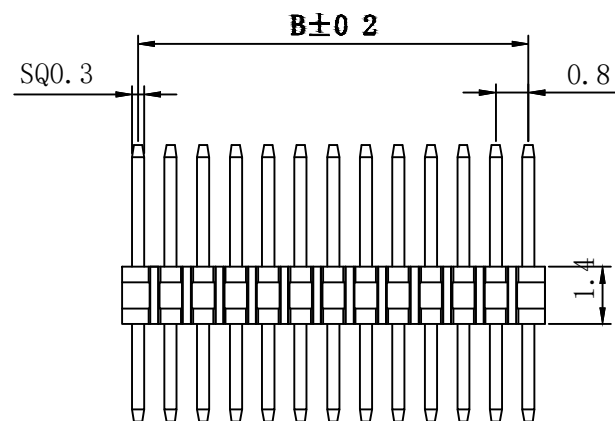
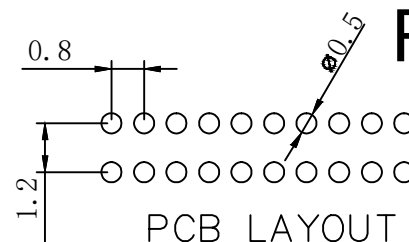
所有原料材质，生产制程，电镀必须符合RoHS要求

REV.	ECN NO.	LOCAS.	DESCRIPTION	DATE	DESIGN
A			RELEASE TO CUSTOMER	150116	YINC



SPECIFICATIONS:

Current Rating: 0.75Amp
 Insulator Resistance: 1000Megohms min
 Dielectric withstanding: AC 500V
 Operating Temperature: -40° ~ +85°
 Max Processing Temp 260°C for 5~10 seconds
 Contact Material: Brass
 Insulator Material: PA6T UL 94V-0
 Plating: G/F



Contacts Per Row	Dimensions		Contacts Per Row	Dimensions	
	A	B		A	B
2*2pin			2*26pin	20.80	20.0
2*2pin	1.6	0.8	2*27pin	21.6	20.8
2*3pin	2.4	1.6	2*28pin	22.4	21.6
2*4pin	3.2	2.4	2*29pin	23.2	22.4
2*5pin	4.0	3.2	2*30pin	24.0	23.2
2*6pin	4.8	4.0	2*31pin	24.8	24.0
2*7pin	5.6	4.8	2*32pin	25.6	24.8
2*8pin	6.4	5.6	2*33pin	26.4	25.6
2*9pin	7.2	6.4	2*34pin	27.2	26.4
2*10pin	8.0	7.2	2*35pin	28.0	27.2
2*11pin	8.8	8.0	2*36pin	28.8	28.0
2*12pin	9.6	8.8	2*37pin	29.6	28.8
2*13pin	10.4	9.6	2*38pin	30.4	29.6
2*14pin	11.2	10.4	2*39pin	31.2	30.4
2*15pin	12.0	11.2	2*40pin	32.0	31.2
2*16pin	12.8	12.0	2*41pin	32.8	32.0
2*17pin	13.6	12.8	2*42pin	33.6	32.8
2*18pin	14.4	13.6	2*43pin	34.4	33.6
2*19pin	15.2	14.4	2*44pin	35.2	34.4
2*20pin	16.0	15.2	2*45pin	36.0	35.2
2*21pin	16.8	16.0	2*46pin	36.8	36.0
2*22pin	17.6	16.8	2*47pin	37.6	36.8
2*23pin	18.4	17.6	2*48pin	38.4	37.6
2*24pin	19.2	18.4	2*49pin	39.2	38.4
2*25pin	20.0	19.2	2*50pin	40.0	39.2

L=0.3*6.8mm

DIM	TOL	DIM	TOL
X.	±0.30	X'	±4.0'
X.X	±0.25	X.X'	±3.0'
X.XX	±0.20	X.XX'	±2.0'
X.XXX	±0.10	X.XXX'	±1.0'

THIS DRAWING CONTAINS INFORMATION THAT IS PROVIDED BY LASTAR TECHNOLOGY AND SHOULD NOT BE USED WITHOUT WRITTEN PERMISSION

DRAW NO.		DATE	
DESIGN	YINC	150116	
CHECK	ZHAOZZ	150116	
APPROVED	HUXW	150116	

LSDCOM
<http://www.lsdconn.com>
WT
<http://www.asia-wt.com>

■深圳朗思达 □香港朗思达

□深圳共营伟业 □前海共赢

connector & cable

DRAW NAME: 排针 0.8 双排 DIP180		P/N NO. PH-42XX-1DM9-37		SHORT CODE	
UNIT: mm	SHEET: N/A	MODEL		REV. A	
SCALE N/A					