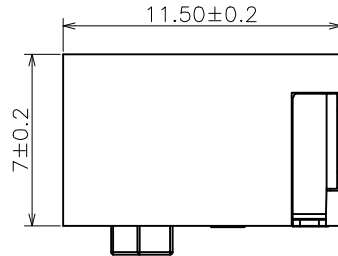
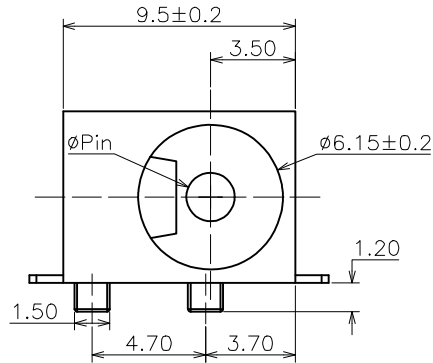


\*All raw material,production process,electroplating must meet the requirements of EU RoHS.\*

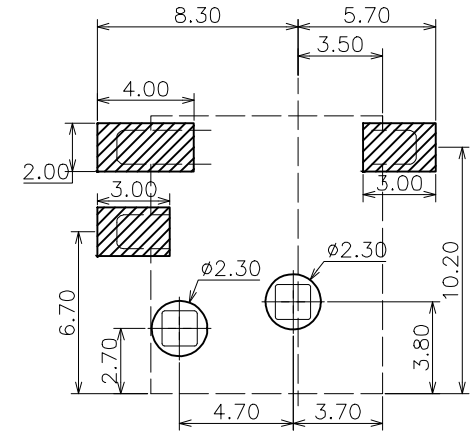
REV.	ECN NO.	LOCAS.	DESCRIPTION	DATE	DESIGN
A0			RELEASE TO CUSTOMER		HANG
E					HANG



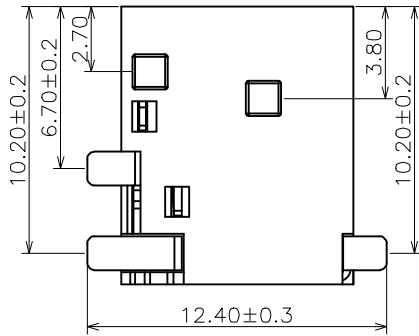
PIN	ø1.65	ø2.0	ø2.5
APPD		✓	✓

**Ordering Information of Product:**  
DC-09044D-XX

XX: the diameter of the central PIN  
 XX=16, ø=1.65mm  
 XX=20, ø=2.0mm  
 XX=25, ø=2.5mm

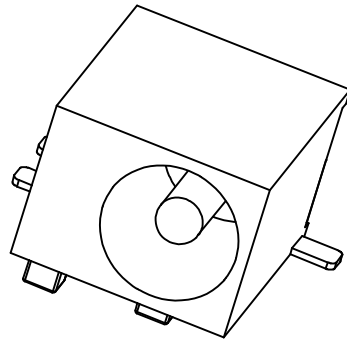


PCB LAYOUT



**SPECIFICATION**

1. Current Rating:1.0Amp
2. Operation Voltage:30V
3. Contact Resistance:30m Ohms Max
4. Insulation Resistance:100M Ohms Min
5. Dielectric Withstanding Voltage: 500VAC
6. Mating and Unmating Force:3 to 20N
7. Life:5000 Cycles



深圳朗思达科技有限公司

DIM	TOL	DIM	TOL
X.	±0.30	X'	±4.0°
X.X	±0.25	X.X'	±3.0°
X.XX	±0.20	X.XX'	±2.0°
X.XXX	±0.10	X.XXX'	±1.0°

THIS DRAWING CONTAINS INFORMATION THAT IS PROVIDED IN CONFIDENCE OR ELECTRONIC QUALITY AND SHOULD NOT BE USED WITHOUT WRITTEN PERMISSION

DRAW NO.						DATE						DRAW NAME:																	
DESIGN						HANG						20200218						DC座 DC-044 SMT											
CHECK						ZHAOZZ						20200218						P/N NO. 30500087						CIB CODE:					
APPROVED						RYAN						20200218						UNIT: mm		SHEET: N/A		MODEL:		REV. E		SCALE N/A			