

1 2 3 4 5 6 7 8

REV.	ECN NO. / DESCRIPTION	DATE
A		20/11/20

注:

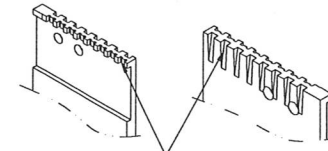
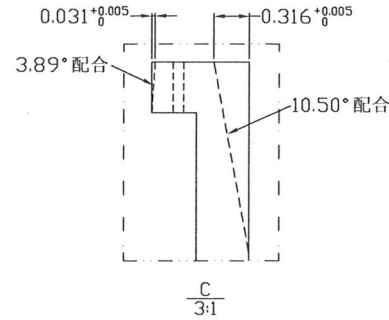
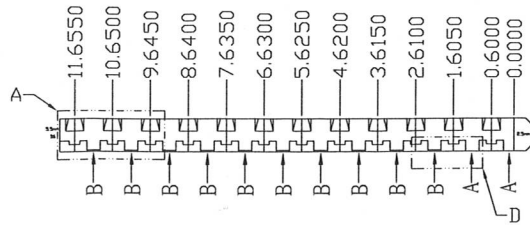
- 1.所有磨床轉角處清角R<0.02
- 2.零件變形需控制在0.005mm以內
- 3.零件加工完成后小槽內不得有毛刺

F

F

E

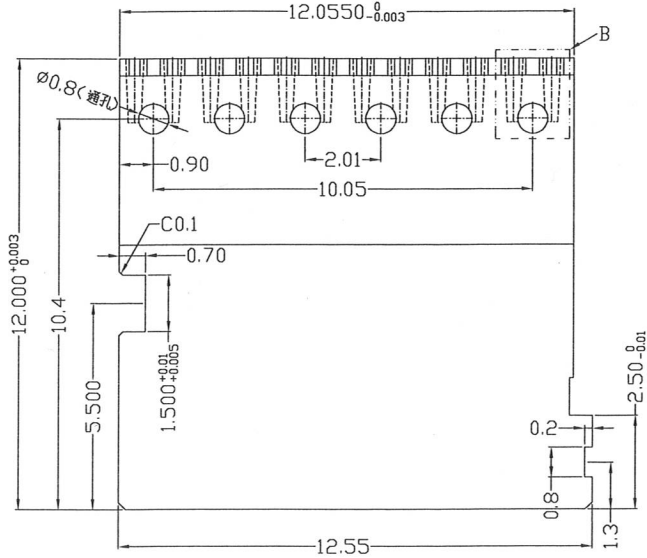
E



1. 頭部所有小槽需使用磨床甩刀加工.
2. 所有小槽內不得有毛刺.

D

D

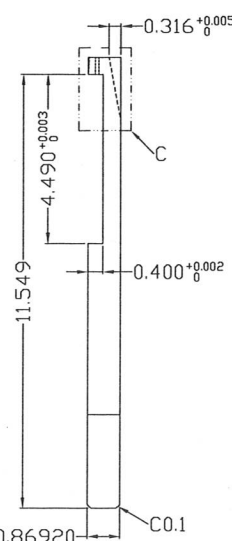


C

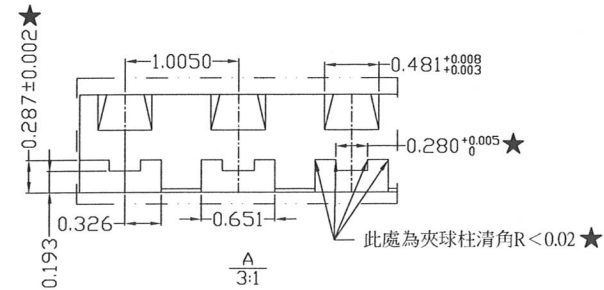
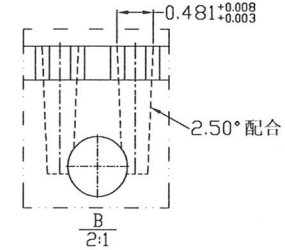
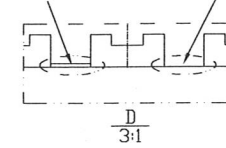
C

A

A



"B"PIN針此處要加工3.89度對插斜度
"A"PIN針此處不用加工3.89度對插斜度



★0.86920
累計公差: ①:100PCS+0.01mm(毫米)
②:單件1PCS+0.1μm(微米)

GENERAL TOLERANCES UNLESS SPECIFIED	
X ± 0.05	X.* ± 1°
.XX ± 0.01	.X.* ± 0.5°
.XXX ± 0.005	.XX.* ± 0.1°
.XXXX ± 0.002	.XXX.* ± 0.05°

DRAWN BY CHECKED BY APPROVED BY

20/11/20

Q'TY

4

FINISH

HRC52°~54°

MATERIAL

ASSAB-Viking(超深冷處理)

TITLE

LGA 4094 Socket SP3 主插母模仁

CAYMAN MOULD TECHN. CO.,LTD

SIZE	UNITS	PART NO.	DWG NO.	SHEET	SCALE	REV
A4	MM	BZIFS020-P002	200	1/1	1:0.26	A

1 2 3 4 5 6 7 8