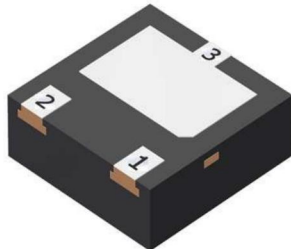
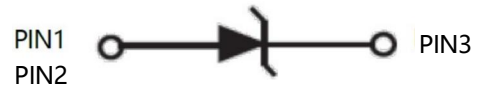


APPEARANCE



DFN2020-3 (Top View)

PIN CONFIGURATION



Pin configuration (Top view)

Descriptions

The APES24H120-20 is a Uni-directional transient voltage suppressor (TVS) to protect sensitive electronic components from electrostatic discharge (ESD). It is particularly well-suited for cellular phones, PMP , MID, PDA, digital cameras and other electronic quipment. The APES24H120-20 is safely dissipating ESD strikes to meet the ESD immunity testing of IEC61000-4-2 ($\pm 30KV$).

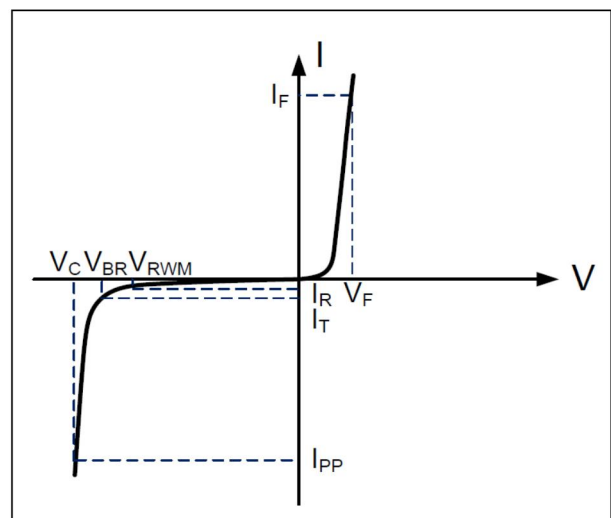
The APES24H120-20 is available in DFN2020-3 package. Standard products are Pb-free and Halogen-free.

Order information

Device	Package	Shipping
APES24H120-20	DFN2020-3	3000/Tape&Reel

Electrical Parameters (T=25°C)

Symbol	Parameter
V_{RWM}	Reverse Stand-off Voltage
I_R	Reverse Leakage Current @ V_{RWM}
V_{BR}	Reverse Breakdown Voltage @ I_T
I_T	Test Current
I_{PP}	Reverse Peak Pulse Current
V_C	Clamping Voltage @ I_{PP}
I_F	Forward Current
V_F	Forward Voltage @ I_F



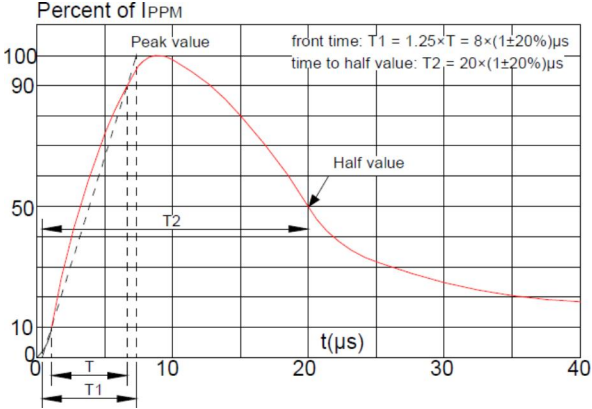
Absolute maximum ratings

Parameter	Symbol	Rating	Unit
Peak pulse power (tp = 8/20μs)	Ppk	3800	W
Peak pulse current (tp = 8/20μs)	I _{PP}	150	A
ESD according to IEC61000-4-2 air discharge	V _{ESD}	±30	kV
ESD according to IEC61000-4-2 contact discharge		±30	kV
Junction temperature	T _J	150	°C
Operating temperature	T _{OP}	-55~125	°C
Storage temperature	T _{STG}	-55~150	°C

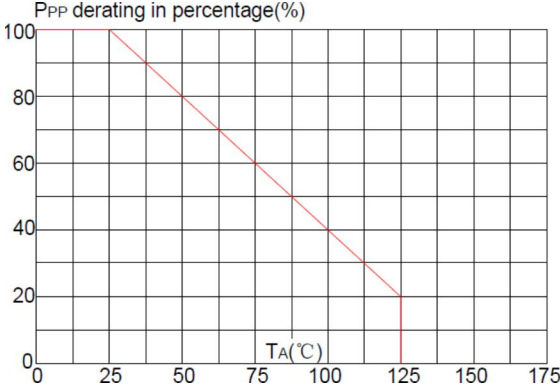
Electronics characteristics (Ta=25°C)

Parameter	Symbol	Condition	Min	Typ	Max	Units
Reverse Stand-off Voltage	VRWM				24	V
Reverse Breakdown Voltage	VBR	I _t =1mA	26	28.5	32	V
Reverse Leakage Current	I _R	VRWM=24V			1.0	uA
Clamping Voltage	V _C	I _{pp} =120A, tp=8/20us			32	V
Junction Capacitance	C _j	VR=0V, f=1MHz		660		pF

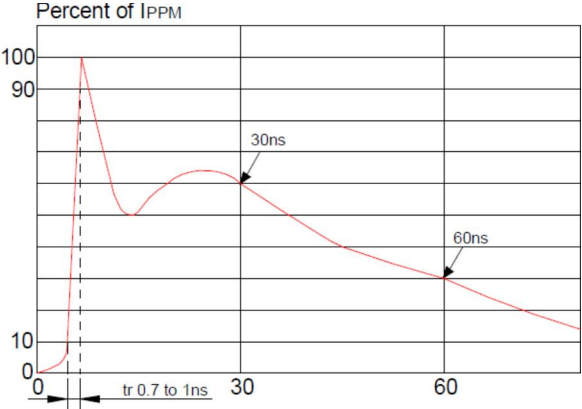
Typical characteristics (Ta=25°C)



Pulse Waveform (8/20us)

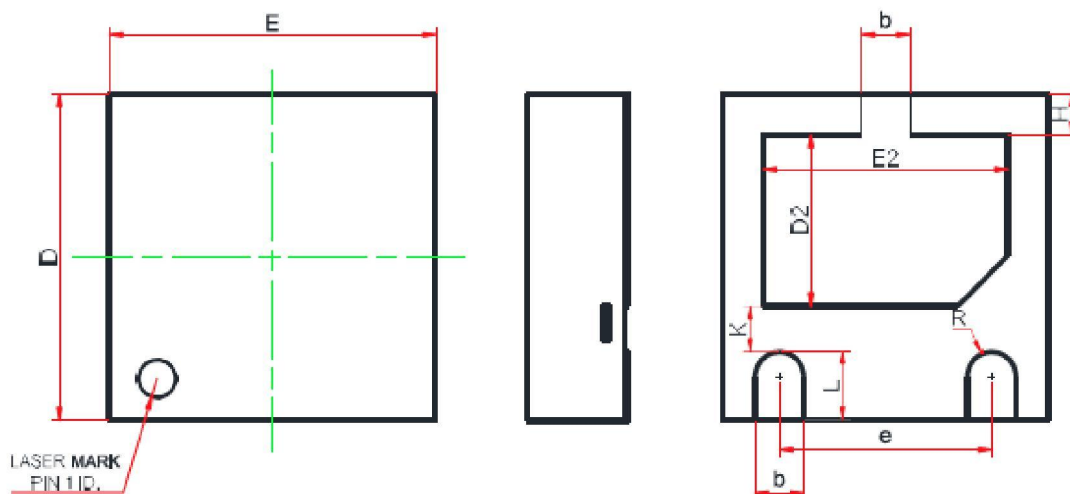


Pulse Derating Curve

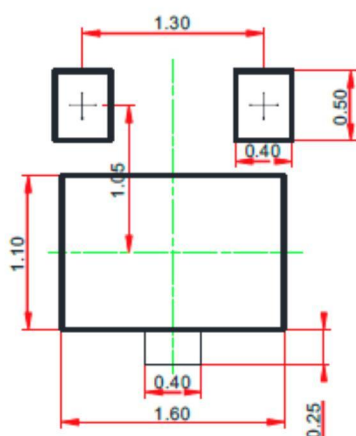


ESD Clamping(8kV Contact Discharge)

PACKAGE OUTLINE DIMENSIONS(DNF2020-3)



SOLDERING FOOTPRINT



Symbol	Dimensions In Millimeters		
	Min.	Typ.	Max.
A	0.51	0.55	0.60
A1	0.00	0.02	0.05
A3	0.15 REF.		
b	0.25	0.30	0.35
D	1.90	2.00	2.10
E	1.90	2.00	2.10
D2	0.85	1.00	1.10
E2	1.35	1.50	1.60
e	1.20	1.30	1.40
H	0.20	0.25	0.30
K	0.20	0.30	0.40
L	0.35	0.40	0.45
R	0.15	-	-

Note:

This recommended land pattern is for reference purpose only.