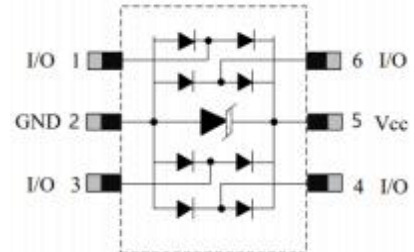


APPEARANCE



SOT23-6L(Bottom View)

PIN CONFIGURATION



Pin configuration(Top view)

Descriptions

The APES5.0L4.0-23.6 is a Bi-directional transient voltage suppressor (TVS) to protect sensitive electronic components from electrostatic discharge (ESD). It is particularly well-suited for cellular phones, PMP , MID, PDA, digital cameras and other electronic quipment. The APES5.0L4.0-23.6 is safely dissipating ESD strikes to meet the ESD immunity testing of IEC61000-4-2 ($\pm 15KV$).

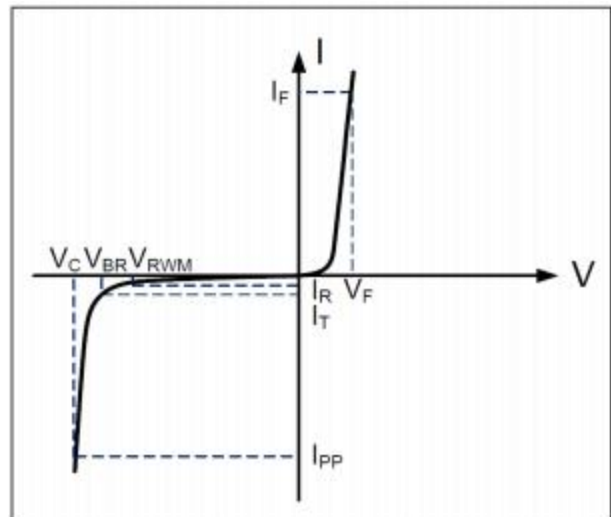
The APES5.0L4.0-23.6 is available in SOT23-6L package. Standard products are Pb-free and Halogen-free.

Order information

Device	Package	Shipping
APES5.0L4.0-23.6	SOT23-6L-2L	3000/Tape&Reel

Electrical Parameters (T=25°C)

Symbol	Parameter
V_{RWM}	Reverse Stand-off Voltage
I_R	Reverse Leakage Current @ V_{RWM}
V_{BR}	Reverse Breakdown Voltage @ I_T
I_T	Test Current
I_{PP}	Reverse Peak Pulse Current
V_C	Clamping Voltage @ I_{PP}
I_F	Forward Current
V_F	Forward Voltage @ I_F



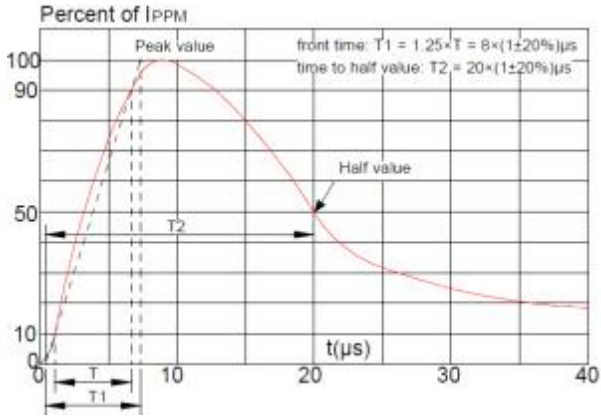
Absolute maximum ratings

Parameter	Symbol	Rating	Unit
Peak pulse power (tp = 8/20μs)	Ppk	60	W
Peak pulse current (tp = 8/20μs)	IPP	4.0	A
ESD according to IEC61000-4-2 air discharge	VESD	±15	kV
ESD according to IEC61000-4-2 contact discharge		±15	kV
Junction temperature	TJ	150	°C
Operating temperature	TOP	-55~125	°C
Storage temperature	TSTG	-55~150	°C

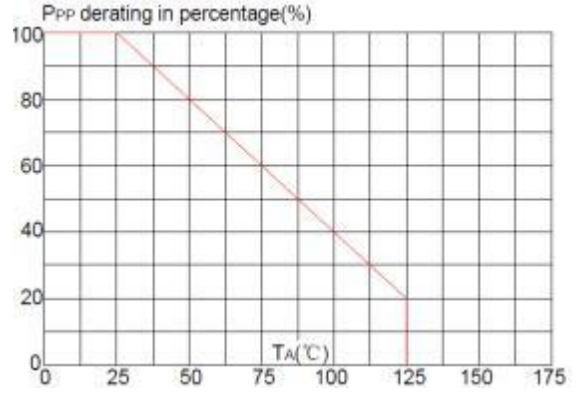
Electronics characteristics (Ta=25°C)

Parameter	Symbol	Condition	Min	Typ	Max	Units
Reverse Stand-off Voltage	VRWM				5.0	V
Reverse Breakdown Voltage	VBR	It=1mA	5.8	6.7	8.8	V
Reverse Leakage Current	IR	VRWM=5.0V			0.1	uA
Clamping Voltage	VC IO-GND	Ipp=4.0A, tp=8/20us			15	V
Junction Capacitance	Cj IO-IO	VR=0V, f=1MHz		0.4		pF

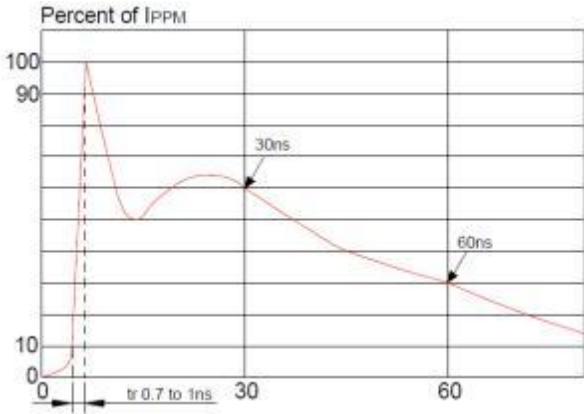
Typical characteristics (Ta=25°C)



Pulse Waveform (8/20us)

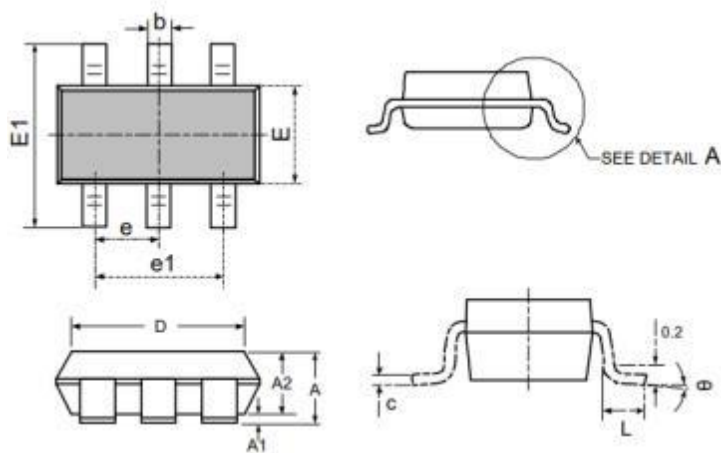


Pulse Derating Curve

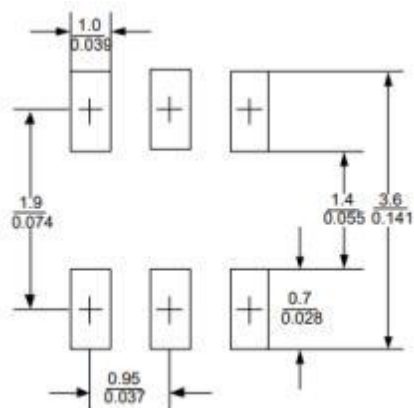


ESD Clamping(8kV Contact Discharge)

PACKAGE OUTLINE DIMENSIONS(SOT23-6L)



SYMBOL	DIMENSIONS			
	INCHES		MILLIMETER	
	MIN	MAX	MIN	MAX
A	0.041	0.049	1.050	1.250
A1	0.000	0.004	0.000	0.100
A2	0.041	0.045	1.050	1.150
D	0.111	0.119	2.820	3.020
E	0.059	0.067	1.500	1.700
E1	0.104	0.116	2.650	2.950
e	0.037(BSC)		0.950(BSC)	
e1	0.071	0.079	1.800	2.000
L	0.012	0.024	0.300	0.600
theta	0°	8°	0°	8°



Note:

This recommended land pattern is for reference purpose only.