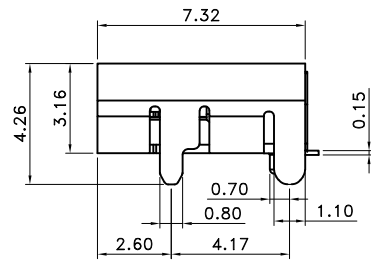
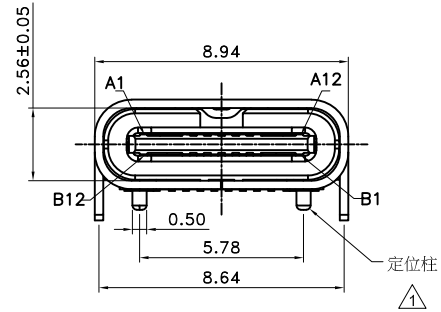


AFTER MATING



■ SPECIFICATIONS

- Current Rating : 5.0A
- Voltage Rating : 48.0V DC/AC  $\triangle$
- Insulation Resistance : 100M $\Omega$  min.
- Dielectric Withstand Voltage, AC 100V For 1 Minute.
- Temperature Range : -40 $^{\circ}$ C to +85 $^{\circ}$ C
- Insertion Force : 0.5~2.0kgf
- Removal Force : 0.6~2.0kgf
- Durability : 10000 Cycles

■ USB CONNECTOR

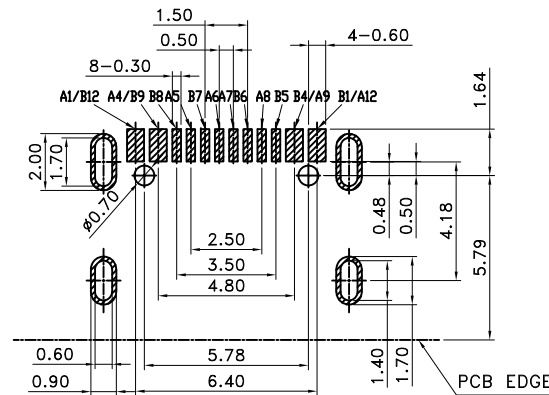
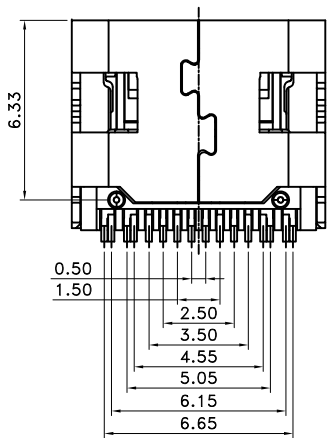
- Part No. : GJS-UB31CF5R52-16 X BK  $\textcircled{1}$   $\textcircled{2}$

$\textcircled{1}$  Blank : 无定位柱  $\triangle$   
P : 有定位柱

$\textcircled{2}$  Base colour :  
BK : Black

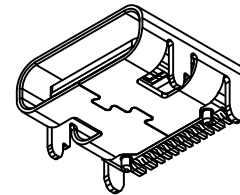
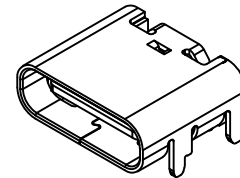
• Material :

1. Contact : Copper Alloy, 接触区域镀普金, 焊接区镀半金镍
  2. Base : High Temperature Resistant Plastic, UL94 V-0
  3. Shell : Stainless Steel, Nickel Plated
  4. Middle Spring: Stainless Steel
- Q'ty : 1500 pcs/Reel



Recommended PCB Layout

General Tolerance  $\pm 0.05$



PIN NUMBER SIGNAL NAME

PIN NUMBER	SIGNAL NAME	PIN NUMBER	SIGNAL NAME
A1	GND	B12	GND
A2		B11	
A3		B10	
A4	VBUS	B9	VBUS
A5	CC1	B8	SBU2
A6	DP1	B7	DN2
A7	DN1	B6	DP2
A8	SBU1	B5	CC2
A9	VBUS	B4	VBUS
A10		B3	
A11		B2	
A12	GND	B1	GND



东莞乔唯电子有限公司  
DONGGUAN CHYAO WEI  
ELECTRONIC CO., LTD

APPROVED BY	SCALE	UNIT	TOLERANCE	LTR	REVISION RECORD	NAME	DATE	LTR	REVISION RECORD	NAME	DATE
张育瑞		mm	.0 $\pm 0.35$	$\triangle$	增加定位柱选项及额定电压变更为48V	曾庆根	2025. 8. 11	$\triangle$			
CHECKED BY	PROJ	VER NO.	.00 $\pm 0.25$	$\triangle$				$\triangle$			
曾庆根			.000 $\pm 0.15$	$\triangle$				$\triangle$			
DRAWN BY	DATE	SIZE	ANGLE	$\triangle$				$\triangle$			
曾庆根	2021/05/04	A4	0 $^{\circ}$ $\pm 2^{\circ}$	$\triangle$				$\triangle$			
			.0 $^{\circ}$ $\pm$	$\triangle$				$\triangle$			
			SHEET 1/1	$\triangle$				$\triangle$			

CUSTOMER

Conforms to The RoHS Instruction

PART NO GJS-UB31CF5R52-16XBK

SMT & Type C 母座 16PIN